

# State of Wyoming Corner Record

(in compliance with the CORNER PERPETUATION AND FILING ACT, Wyoming Statutes, 1997, Section 33-29-140, et. seq. and the Rules and Regulations of the Board of Registration for Professional Engineers and Professional Land Surveyors)

Reverse side of this form may be used if more space is needed.

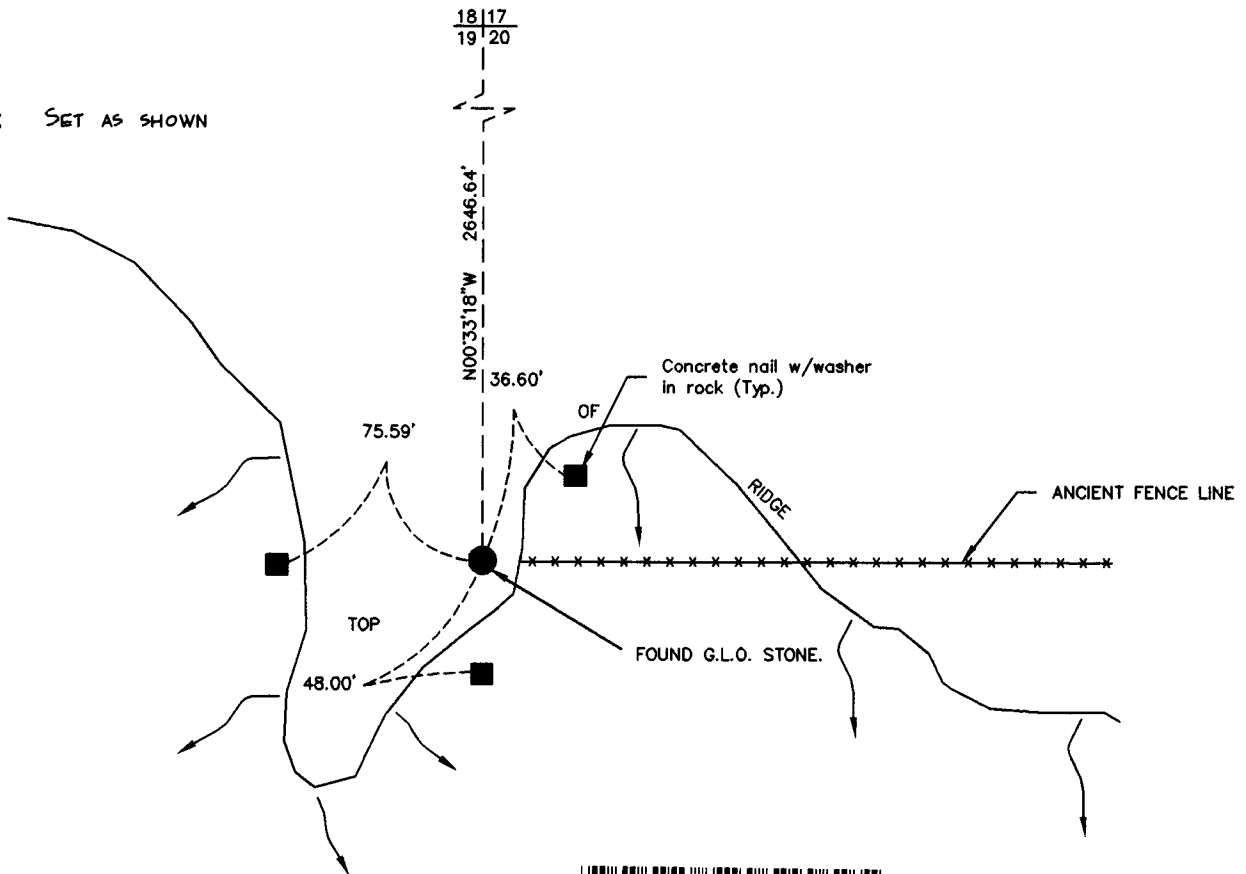
Record of original survey and citation of source of historical information (if corner is lost or obliterated). Description of corner monumentation evidence found and/or monument and accessories established to perpetuate the location of this corner. Sketch of relative location of monument, accessories, and reference points with course and distance to adjacent corner(s) (if determined in this survey). Method and rationale for reestablishment of lost or obliterated corner.

**FOUND:** FOUND ORIGINAL G.L.O. STONE LYING TO THE WEST WITH 1/4 ON WEST FACE. RESET STONE TO UPRIGHT POSITION. STONE SETS AT THE TOP OF A RIDGE ON A FINGER THAT POINTS SOUTHWEST. SET STAKE & LATHE. REFERENCED AS SHOWN.

**G.L.O. RECORD:** GRANITE STONE 15" x 12" x 6"  
MEASURED 16" x 16" x 8"

**SET:** NOTHING

**REFERENCES:** SET AS SHOWN



RECORDED 12/31/2003 AT 1:40 PM REC# 375050 BK# 1784 PG# 1253  
DEBRA K. LATHROP, CLERK OF LARAMIE COUNTY, WY PAGE 1 OF 1

Date of Field Work: 12-03 Office Reference: 2-2389.03

**CROSS INDEX DIAGRAM**

Firm/Agency, Address

Cotton D. Jones, P.L.S.  
A.V.I., p.c.  
2035 Westland Road  
Cheyenne, WY 82001  
Telephone Number: (307) 637-6017

This corner record was prepared by me or under my direction and supervision.

**SEAL & SIGNATURE**

A	1	2	3	4	5	6	7	8	9	10	11	12	13	14	15	16	17	18	19	20	21	22	23	24	25
B																									
C	6				5				4					3					2						
D																									
E																									
F																									
G	7				8				9					10					11						
H																									
J																									
K																									
L	18				17				16					15					14						
M																									
N																									
O																									
P	19	●			20				21					22					23						
Q																									
R																									
S																									
T	30				29				28					27					26						
U																									
V																									
W																									
X	31				32				33					34					35						
Y																									
Z	1	2	3	4	5	6	7	8	9	10	11	12	13	14	15	16	17	18	19	20	21	22	23	24	25

